

The PSS Wargamers Series – Living Wargames.

The PSS Wargamer Series has been created for those people who enjoy a stimulating and thought provoking game as well as an exciting one requiring all your arcade game reflexes.

Historically they are as accurate as possible, allowing you to recreate actual events and examine "what if" situations. That is not to say they are not exciting – we also incorporate optional arcade simulation screens allowing you to fly fighter planes, drive tanks, command destroyers etc in the actual combat situations that you set up via the main game.

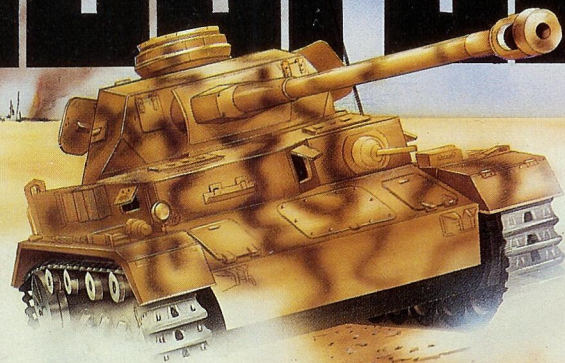
TOBRUK – THE CLASH OF ARMOUR

After months of fierce fighting in the North African desert, the British and Commonwealth forces had taken and defended Tobruk, a key port to Mediterranean strategy and vital to any supply in the desert war. With the Axis forces pushed back to Gazala, an immense operation began laying over 500,000 mines in an area stretching from Gazala in the North to Bir Hacheim in the South. Rommels' offensive began in May 1942. Against all the odds, by early July he had retaken Tobruk and pushed the British back into Egypt.

TOBRUK – THE GAME

In this computer simulation you take the role of Field Marshal Rommel. At your disposal are 10 divisions of crack Afrika Korps and Italian tanks and troops. Your task – split the Gazala line and run for Tobruk.

TOBRUK

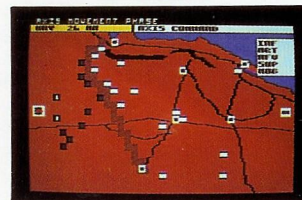


THE CLASH OF ARMOUR
AMSTRAD SERIES

WARGAMERS
SERIES

TOBRUK
THE CLASH OF ARMOUR

MAIN MAP



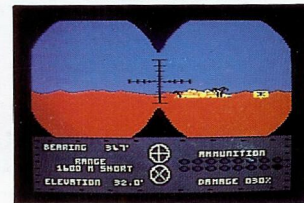
TANK ATTACK



TANK DRIVING



TOWN ATTACK



TOBRUK – THE FEATURES

Player vs. Computer
2 player game
2 computer game using "networked"
Amstrads (extra cable required).
Full joystick control.
Phased game.
Optional arcade sequences.
Full tank simulator including:

Driving
Main Gun
Machine Gun

Resupply Phase
Mine Laying / Lifting
Air Phase including:
Ground Attack
Air to Air
Long range bombing

Engineer phase
Green screen option
(Amstrad only)
Tank recovery / sabotage



SEE OVER FOR FURTHER DETAILS



FOR FULL CATALOGUE SEND S.A.E. TO
PSS 462 STONEY STANTON ROAD, COVENTRY, CV6 5DG.