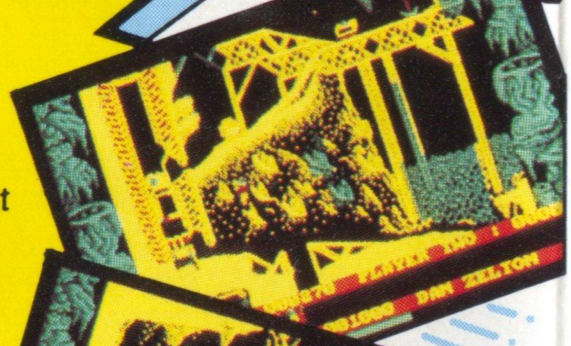
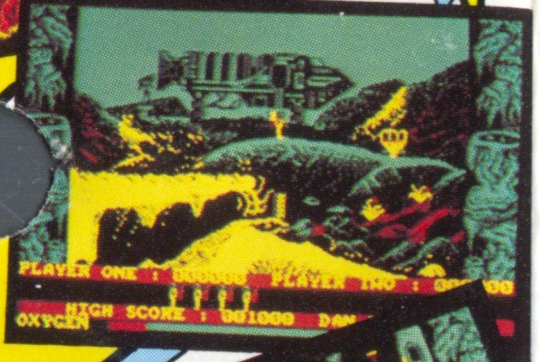




BRILLIANT GRAPHICS.

AMSTRAD SCHNEIDER  
464/664/6128

The entire crew of ROTAR 1, an interplanetary mining vessel, laughed loudly at private Harry Jones - 'BRAINACHE' as they sent him back to the Stella mines to collect his forgotten equipment. Would they ever see their fat friend again?



# BRAINACHE



3038



BY OWEN BRUNETTE



AMSTRAD SCHNEIDER  
464/664/6128

2 PLAYER OPTION

After BRAINACHE had left in the robo-shuttle, heading for the STELLA mines on planet NESBIT the crew on ROTAR 1 began to worry - Although they teased BRAINACHE they loved their chubby friend and knew how dangerous the task ahead of him really was . . .

On the lonely cruise back to Nesbit 'BRAINACHE' planned his actions. He was fed up with his friends' cynical comments and decided to show them once and for all how clever he really was.

He would retrieve all his mining equipment and then forage further into the depths of the ancient mine shafts to find the fabled ANATESE diamond. 'Then they will never call me BRAINACHE again', he muttered determinedly under his breath!!

JOYSTICK OR KEYBOARD

LOADING:  
464: RUN' (ENTER)  
664/6128: !TAPE (ENTER) RUN' (ENTER)



ACTUAL AMSTRAD SCREEN SHOTS

## GAMEPLAY

Leave the ship and make your way down the mine being careful of the plants and creatures that will try to attack you. On the way down you must find and collect your mining equipment. After you have done this try to find the ANATESE diamond then make your way back to the ship before your oxygen supply runs out!!!!

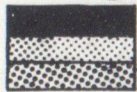
## STRATEGY

There are several important items of equipment which you must find and return to your spaceship individually. There are also some tools, such as the ladder, which will help you in your task. These can be carried at the same time as items of equipment.

It will require great skill and practice to outsmart the strange mutated insects and creatures which obstruct your progress.

## CONTROLS

PRESS 1 to start a one player game or 2 to start a two player game. S=up, Z=down, ←=left, →=right, T=take, D=drop, C=climb  
PRESS D to define the keys or joystick then press the appropriate keys or move the joystick.



## ZUM EINSPEICHERN

Du mußt deine ganze Bergwerktausrüstung finden und alle Teile einzeln zu deinem Raumschiff zurückbringen. Du wirst auch manche nützlichen Werkzeuge finden, wie die Leiter und den Pickel, die du sehr brauchen wirst.

Ladeanweisung: Taste 1 drücken um das Spiel fuer 1 Spieler zu starten, Taste 2 druecken um das-Spiel fuer 2 Spieler zu starten.

Tastatur:

S Hoch, Z Unten, ← Links, → Rechts, T Nehmen, D Oslassen, C Klettern.

Druecke Taste D um zu wählen zwischen Tastatur oder Joystick, dann benutze die geeigneten tasten oder bewege den Joystick.



## INSTRUCTIONS DE CHARGEMENT

Il te faut trouver chaque pièce de ton équipement de mineur et le rapporter une par une sur ton vaisseau spatial. Tu trouveras aussi de nombreux outils, tels l'échelle et le piolet, qui te seront très utiles.

Instructions:

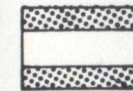
Tapper la touche 1 pour le jeu à un joueur

Tapper la touche 2 pour le jeu à deux joueurs

Clavier:

S Vers le haut, Z Vers le bas, ← Gauche, → Droite, T Prendre, D Lâcher, C Grimper.

Tapper la touche D pour choisir entre clavier ou joystick, et utiliser les touches appropriées ou le joystick.



## INSTRUCCIONES DE CARGA

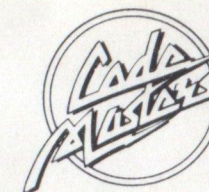
Debes recoger todo tu equipo de minería y llevarlo a la nave espacial pieza por pieza. Hay también algunas cosas, como la escalera, para subir y coger las cosas necesarias.

Controles

Pause 1 para comenzar con un jugador 0 2 para dos jugadores.

S Arriba, Z Abajo, ← Izquierda, → Derecha, T Coger, D Dejar, C Subir

Pulse D para redefinir las teclas o joystick y pulse las teclas elegidas o el disparador del joystick.



Made in England

This program including code, graphics, music and artwork are the copyright of Codemasters Software Co. Ltd. and no part may be copied, stored, transmitted or reproduced in any form or by any means, hired or lent without the express permission of Codemasters Software Co. Ltd.

Design & Artwork - NIGEL FLETCHER