

JONNY Quest

Jonny Quest, Hanna Barbera's all action-adventure cartoon character is turned into the "Arcade" all action-adventure character in this super Hi-Tec game.

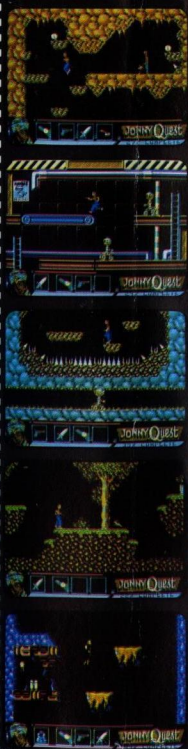
- Over 100 frames of animation for Jonny Quest alone (C84 version)
- Massive play area consisting of 133 different screens spread over 6 different levels (C84 version)
- Underwater Scuba diving section
- Lifts & electric doors - Pre programmed
- Robot Guards



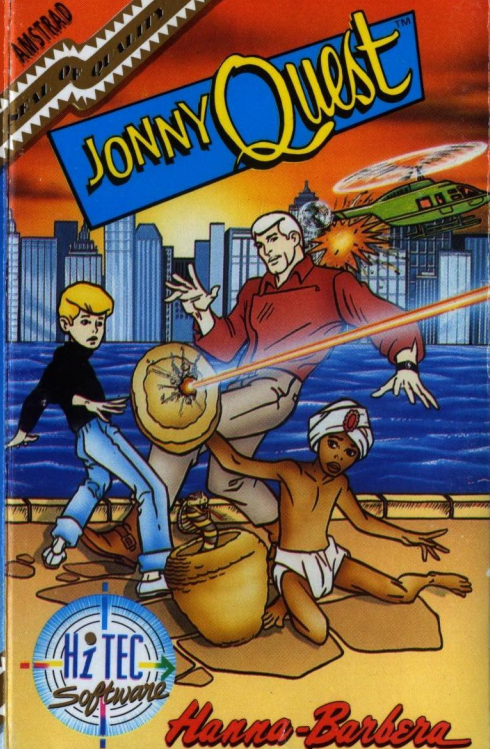
Hi-TEC SOFTWARE LTD. P.O. BOX 230, SHEFFIELD S7 2E7. FAX: 0742 530547



SCREEN SHOTS FROM C84 VERSION



JONNY Quest



JONNY Quest

Jonny is the only son of Dr Benton Quest, one of the worlds top scientists. Ever in danger of being kidnapped by forces trying to control his father, Jonny is looked after by a U.S. government appointed bodyguard, Race Bannon.

This however does not stop Jonny and his mystical Indian friend Hadji along with Jonnys' pet dog Bandit getting into all sorts of hair raising adventures.

THE PLOT

Jonny's father, Benton Quest, has been captured by the evil Dr Zin and is being forced to help create a deadly laser.

Jonny, Race, Hadji and Bandit set off to rescue the captured scientist. However things don't go according to plan, Race, Hadji and Bandit are captured by Dr Zin's guards and Jonny must continue on alone to free them all.

© 1991 HANNA-BARBERA PRODUCTIONS INC.



ENGLISH cont.



THE GAME

You play the part of Jonny Quest in this arcade action adventure, use all your skill and courage to free your father and friends.

During the game you will come across many obstacles which you have to overcome. At your disposal you have a selection of items to help fight your enemies and you will also find things along the way which you can use.

SOME OF THE ITEMS YOU MUST FIND INCLUDE

Lazer Stun Gun - Torch - Diving Equipment - Decoder for Computer Terminals - Dynamite for unblocking entrances -

LOADING INSTRUCTIONS - AMSTRAD

Hit CTRL & Small ENTER keys together then press PLAY then ENTER.

Q	Up/Jump (Hold down for a longer jump)
A	Down
O	Left
P	Right
Space	Punch/Use Object
1	Select Object
H	Pause (Any key to restart)

Or use joystick.

CODING DEVICE INSTRUCTIONS:

To access the computer terminals, you must first be holding the code device.

You must then stand in front of a computer terminal and pull down. A small meter on the panel will then decrease.

When this has reached the bottom, the terminal will have been searched and any code found will be displayed on the code device.

MORE HITEC MEGA GAMES..



CRICKET CAPTAIN *

GUARDIAN II

REVENGE OF THE MUTANTS

SPACE RIDER JET PACK Co.

FUTURE BIKE SIMULATOR

YOGI'S GREAT ESCAPE

HONG KONG PHOOEY

RUFF & REDDY

HITEC SEAL OF QUALITY ASSURANCE



HT 165

ATOM ANT

CAULDRON I & II

ANTIRIAD

TRACKSUIT MANAGER

BLAZING THUNDER

YOGI BEAR & FRIENDS

QUICK DRAW McGRAW

INTERCHANGE

TOP CAT STARRING IN
BEVERLY HILLS CATS

DEFENDERS OF THE EARTH

SCOOPY & SCRAPPY DOO

ROAD RUNNER AND
WILE E. COYOTE

CHEVY CHASE