

A science fiction adventure in 25th Century Eden, with 200+ pictures on everything but the BBC. You may never bite another apple!

Level 9 Computing specialise in big adventures with 200+ locations, detailed scenery and interesting storylines. This one understands a wider range of full English sentences than anything we've seen so far. It has a thousand word vocabulary, better than 50% text compression, multi-tasking in all graphics versions and it's entirely by the Austins.

The Worm in Paradise concludes the Silicon Dream Trilogy, following the award-winning Snowball and Return to Eden (though you don't need to have played these). It's your last chance to give an arm and a leg for an inflatable Kim Kimberley.

The robot megapolis of Enoch may be a paradise for the silent majority, but it's a real challenge for those with higher ambitions. Especially if, with your faithful Dagget wrapped round your leg, you intend to save the world. See the inside of this cover for more details.

Here's what reviewers have said about Level 9:

"The programmers of what must be THE best cassette adventures." - ZZap! 64

"New releases from Level 9 are always welcome. For cassette based games, they are clearly the leaders in the field." - AMTIX

"Level 9 never seem to produce a bad product and indeed the ability of Peter Austin and Co to produce three superb graphic adventures this year is itself verging on sorcery."

- Commodore User

"You really can't go wrong with any Level 9 game as they are all brilliant." - Crash

COPYRIGHT: The game and name THE WORM IN PARADISE and all associated software code, listings, illustrations and text etc. are the exclusive property of Level 9 Computing. They must not be copied, transmitted, reproduced, hired, lent, distributed, stored or modified in any form without the express written permission of Level 9 Computing.

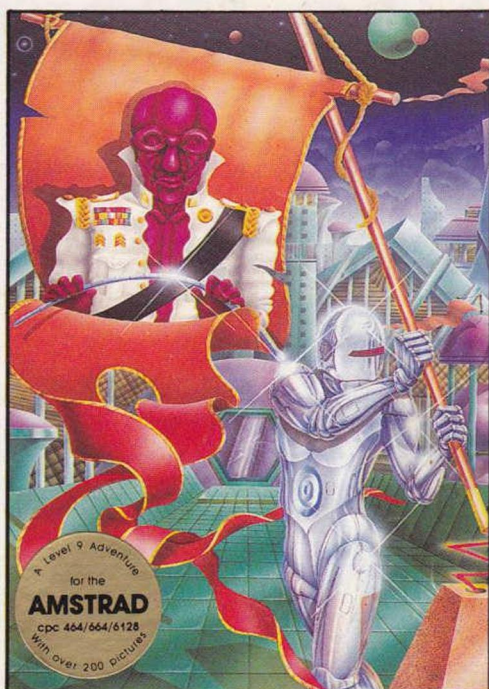
Level 9 Computing, P.O. Box 39, Weston-Super-Mare, Avon BS24 9UR



The Worm in Paradise



The Worm in Paradise



Level 9 Computing

CASSETTE INSTRUCTIONS

To load and start the cassette version of the game, put the tape in your recorder and follow the instructions below for your computer. The underlined text is what you type (remember to press RETURN or ENTER after each command you type).

AMSTRAD CPC464	Type <u>RUN</u> (RETURN).
AMSTRAD CPC664/6128	Type <u>ITAPE</u> (RETURN) <u>RUN</u> (RETURN).
ATARI 400/800	Open the front cover of your Atari. Remove all cartridges and press START while you close the cover. Start the tape and press RETURN.
ATARI XL/XE	Press START and OPTION together while you switch on the Atari, then start the tape and press RETURN. If the game loads without starting, type <u>PRINT USR(29472)</u>
BBC 32k	Type <u>*TAPE</u> then <u>CHAIN</u> and start the tape.
COMMODORE 64	Press SHIFT and RUN/STOP together, then start the tape. In general only 1 side will load.
MSX 64k	Type <u>RUN "CAS"</u> and start the tape.
SPECTRUM 48k	Type <u>LOAD</u> and start the tape.

While playing the cassette version of an adventure, you can save your position (the state of play) on tape. Start a blank tape on RECORD, type SAVE and press ENTER or RETURN. (If the tape doesn't move, press ENTER or RETURN again.) When the program asks you for your next command, stop the tape.

To return to a saved position, you must be playing the game. Type RESTORE and press ENTER or RETURN. If the game asks if you're sure, reply YES followed by ENTER or RETURN again. Rewind the cassette on which the position was saved and start it on PLAY. (If the tape doesn't move, press ENTER or RETURN again.)

CASSETTE LOADING ADVICE

We test cassettes thoroughly and you shouldn't have any problem in loading this game. If you do have difficulties, though, the following may help:

1. Try the other side of the cassette.
2. Load another game from cassette, to check everything's connected.
3. Vary the volume and tone settings on the recorder if you can (fairly loud and fairly "high" should work best).
4. Clean and demagnetise the recorder (following the maker's instructions).
5. Can you try another recorder (or one of another type)?

GUARANTEE:

We'll replace the cassette/disk/microdrive cartridge of this game if you return it to Level 9. If you have any problems in the month after purchase, a replacement of the same type is free.

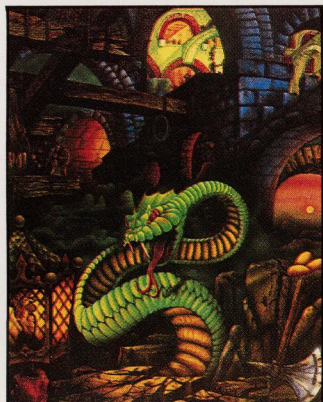
Otherwise, please enclose £1 for a replacement cassette or £2.50 for a disk/microdrive cartridge (if available). Add £1 if outside the UK.

OTHER GAMES

Level 9 Adventures are available from good computer shops. We currently have over 100 different product lines (not all listed here) and as we don't expect shops to stock all of them, we run a mail order service.

To get a FULL COLOUR POSTER, with more details of Level 9 Adventures on the back, please write to us enclosing a stamped, self addressed envelope at least 9" by 6".

Colossal Adventure



Colossal Adventure is a complete, full-size version of the classic mainframe game "Adventure" with all the treasures, creatures, rooms and puzzles of the original. And we've added 70 bonus locations to the endgame. No one else gives you this.

"Colossal Adventure is one of the best in its class. I would recommend it to any adventurer."

- Acorn User

Adventure Quest

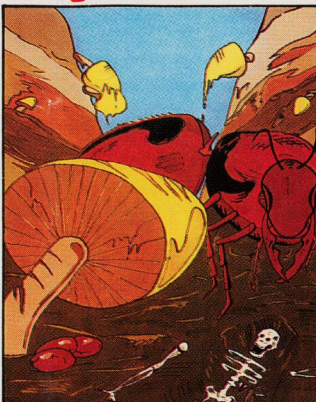


Adventure Quest. Hundreds of years have passed since the time of Colossal Adventure and evil forces are invading the land. One hope remains: you must discover the Old Roads to the Dark Tower, fortress of the Demon Lord. Only there can you defeat him.

"A brilliant adventure that confirms Level 9's place as the ultimate adventure software house"

- Computing with the Amstrad

Dungeon Adventure



Dungeon Adventure completes our Middle Earth trilogy. The Demon has been defeated and his Dark Tower cast down. But its dungeons remain, filled with hoarded treasure and magic.

"Once again Level 9 has created a wonderful adventure sparking off your imagination and transporting you into a world where electricity bills and mortgages have no place."

- MSX Computing

Snowball



Snowball. Meet Waldroids, Night-Ingales and other strange robots in this massive science fiction adventure. But the most baffling puzzle, according to many players, is how to use the control room computer.

"I was impressed by the scope, over 7000 locations, the quality of the location descriptions, and the addictiveness. This one kept me awake for nights!"

- Software Today

Voted "Text Adventure of the Year"

- Crash Micro

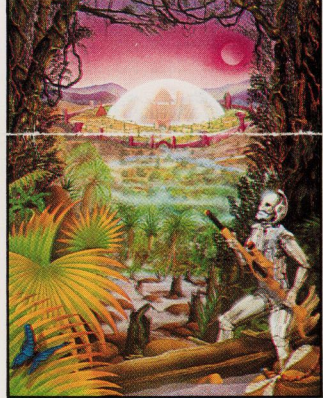
Cass. £9.95 (Disk £11.95)

Cass. £9.95 (Disk £11.95)

Cass. £9.95 (Disk £11.95)

Cass. £9.95 (Disk £11.95)

Return to Eden



Return to Eden is the sequel to Snowball. Marooned in the deadly paradise of Eden's jungles, you must use the weird plant life to survive. Then tackle the strange robot city to secure the fate of the whole planet. "Pick of the week... A mandatory purchase for adventure fans everywhere. Tony Bridge will go gaga."

- Popular Computing Weekly

Lords of Time

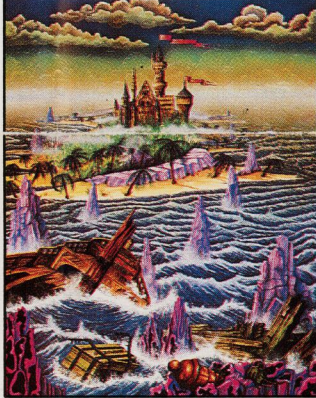


Lords of Time.

"Level 9 - arguably the producers of the best adventure games in the UK - has done it again. **Lords of Time** is a sparkling addition to its stable of winners, with more than 200 beautifully described locations and a repertoire of witty responses to even the dumbest instruction."

- Acorn User

Emerald Isle

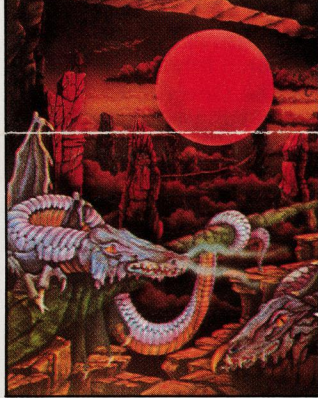


Emerald Isle. Fierce Winds seize your aircraft over the Bermuda Triangle and hurl it to destruction. You escape by parachute, floating downwards to the lonely atoll, "Emerald Isle" from which few escape. The only way out is to solve its challenges

"Emerald Isle" is a game which takes all the best aspects of adventuring and moulds them into a huge yet detailed story which will have you engrossed for hours"

- Crash

Red Moon



Red Moon. The Moon Crystal of Xax supplied good magic for the honest rulers of the Kingdom of Baskalos. Then it was stolen and the land fell into chaos. You must recover the Moon Crystal from the magik-rich castle where it is hidden, armed only with your wits and a handful of spells.

Red Moon has 150+ pictures in Amstrad, Atari, CBM64, MSX and Spectrum versions. Other versions are text only.

"Crash Smash"

- Crash

Cass. £9.95 (Disk £11.95)

Cass. £9.95 (Disk £11.95)

Cass. £6.95

Cass. £6.95

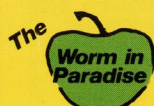
LEVEL 9 ORDER FORM

Post to: Level 9 Computing
P.O. Box 39
Weston-super-Mare
Avon BS24 9UR



The Worm in Paradise HINT REQUEST

Post to:
Clue Club
Level 9 Computing
P.O. Box 39
Weston-super-Mare
Avon BS24 9UR



The Worm in Paradise

The Worm in Paradise is Level 9's ninth adventure and concludes the Silicon Dream trilogy. It takes place on the planet Eden, 100 years after the time of Snowball and Return to Eden (though you don't need to have played either of these first).

You are a citizen of Enoch megapolis of Eden. Unfortunately, when the game starts, you can remember nothing more. It is most odd. Good Luck!

INSTRUCTIONS

When the game pauses in the middle of printing text, read what is on the screen and press SHIFT to continue. The Worm in Paradise uses Level 9's new adventure system and understands commands like:

EAST	STAND UP
TAKE HELMET	OPEN THE DOOR
WEAR IT	PUSH RED BUTTON
DROP THE CARD	EAT PIE
EXAMINE ALL BUT THE HELMET, DUMMY AND LEOTARD AND GO EAST.	
TAKE PLUG AND PLUG HOLE.	
STAND UP. SOUTH, E THEN EXAMINE TREE AND CLIMB IT.	

The program copes with a wider range of English sentences than any other game we've seen. Instructions can be quite complex (see above) but, of course, you can still use one or two-word commands if you prefer.

The Worm in Paradise has a vocabulary of over one thousand words, many of which can be sensibly abbreviated (e.g NORTH to N and NORTHEAST to NE). Here are some of the more useful ones:

TAKE, GET, WEAR, DROP, the 8 main compass directions, IN, OUT, UP, DOWN, LEFT, RIGHT, CLIMB, LOOK, LISTEN, LOOK AT, EXAMINE, FILL, INSERT, OPEN, CLOSE, LIGHT, SCORE, QUIT, TAKE, DROP, EVERYTHING or IT (used with many verbs), SAVE and RESTORE, AGAIN (repeat previous command), INVENTORY (list what is carried), and WORDS and PICTURES (turn pictures off/on in a graphics version).

Ordinary adventures use more words in descriptions than you can use in commands. For example, you might be "standing in a bed of bright flowers beside a stone wall" and try to examine the flowers. A typical response might be along the lines of "I don't understand". The Worm in Paradise does rather better, as you'll discover.

However, it still pays to keep commands simple and experiment to find the best words to use. Good adventuring!

SCORING

No one needs treasure in paradise, so you don't score points for collecting things as in many games. Indeed, hoarding is actually illegal.

Points are scored for finding out about the city of Enoch and for progress within it. And, should you get the chance to save the world, I suggest you make the attempt.

You lose points for being recycled.

EDEN

Eden is the only Earth-like planet of Eridani E (not Eridani A as wrongly stated in Snowball and Return to Eden). It is a most unusual world: habitable without terraforming and covered by strange, aggressive plants.

Human colonists arrived a hundred years ago and Eden now supports half a billion people. Most of them natives and some of them men. The population is distributed between a handful of domed cities, of which Enoch is the first and smallest.

There is no contact between humans and the native fauna, so rumours of aliens are rife. It is said that flying saucers are regularly seen and that intelligent moles live in deep tunnels. But no proof has ever been produced.

This game takes place during the reign of the third Kim, when Eden is run as a benevolent bureaucracy.

It is truly a paradise for the silent majority, with peace in our time, no crime, full employment (with a fifteen-hour week), good housing, more entertainment than anyone could watch etc. etc.

Of course, there's no way that anyone can challenge the system. But then, what right-thinking person would want to?

POLITICS

Governments can theoretically run at a profit, extorting no taxes from their citizens but getting income from such sources as fines for criminal offences and printing money (arguably a positive benefit in an expanding economy). This also involves tight controls on services and routine supervision of the citizens to catch trouble-makers.

The Government of Enoch is run without taxes. Note that the system is underpinned by millions of robot servants who not only work hard, but are immune from corruption.

ENOCH HEALTH SERVICE

Enoch hospitals make a profit, partly from the re-sale of body parts to ageing recipients and partly by charging for in-patient care. They also cut costs by:

- * Medicating the drinking water.
- * Making medical advice freely available via computer.
- * Minimising the time patients spend in hospital.
- * Rewards for being vaccinated and for reporting infectious people as a threat to public health. Disease spreaders would be fined.
- * Restricting mentally abnormal people while enabling them to do useful work if possible (they are the groups who do worst in Eden, as in many societies).

The result is the greatest good for the greatest number at the lowest price, but tough luck for the minority with expensive illnesses.

ENOCH POLICE

The Enoch Police Force also makes a profit. This entails:

- * Fines rather than imprisonment.
- * Rewards to informants. (How many expired tax disks would you see if the police paid a £10 reward for each one reported?)
- * Prosecution of wealthy people for a change. They can afford fines.
- * Summary justice where possible to cut court costs. The accused is assumed guilty but can opt for trial at the risk of a greater penalty.
- * Extensive supervision, to detect crime efficiently.
- * Concealing crime, which increases police costs, is heavily penalised.
- * Replacement of remaining taxes by fines. (In 20th Century Britain, alcohol is taxed while some narcotics attract a fine. Everything is fined on Eden.)

People are potentially immortal on Eden, provided they can replace body organs as these fail. Penniless criminals can easily raise the money to pay fines by cashing in their other assets...

WORK

Robots run the Eridani system, doing all the important work and most of the menial jobs. Whether humans are leisured aristocrats, or pets of the robots is difficult to tell.

Humans are obliged by law to do some work and this involves:

- * extensive "training" schemes;
- * many pen-pushing jobs;
- * fraternities control access to the few good jobs;
- * status is the main concern, not money.

MEANWHILE, IN SPACE

The space robots have finished stripping the Eridani E starsystem, mining every asteroid and hollowing every moon.

The probes sent out from Eden form an ever-expanding sphere, three hundred light years across. They have already found a dozen habitable planets and colonisation has started.

But the people of Eden have no part to play. Originally intended as a source for future colonists, their role is redundant. Machines have learnt how to build people on site (or, strictly speaking, to grow them from ova). Spanners maketh Man.

AFTERWORD

Machines evolved just as surely as any animal. They may not be able to reproduce unaided (nor can many forms of life) but they increase steadily in number and sophistication.

In perhaps ten thousand years, machines have evolved from flints and wooden sticks to videos and Golf GTi's. And evolution continues.

The Silicon Dream Trilogy postulates autonomous robots, each equipped with simple tools and a million blueprints. A robot would travel through space and select any convenient asteroid. There it would land and build with local materials, just like a human castaway.

But where Crusoe built a house, the robot would construct a small factory for tools and mining machinery. Then better tools, simple robots, better factories, better robots, and eventually a production line for robots like the one that started it all. Lots of them.

Imagine trillions of robots, coasting through the Galaxy to colonise every solar system. This is the situation at the time of The Worm in Paradise.

Now let millenia go past. The Galaxy could be colonised by inconceivably advanced robots. It seems almost inevitable.

Our Galaxy is very big and billenia old. Our sun is a fairly ordinary star. Probably there are other intelligent beings out there, some more advanced than us. I wonder where, or who, their robot colonists are?

IMPLEMENTATION

The Worm in Paradise is the first game designed and coded at Level 9 West, somewhere in the Mendip Hills which rise from the Somerset Levels.

We have spent 12 months enhancing our adventure system with world-beating features for the coming years and the Worm in Paradise is the first game to use the new system.

Standard features include a 1000+ word vocabulary, the most advanced English ever understood by a cassette-based game, better than 50% text compression, type-ahead on all micros and multi-tasking so players need never wait while a picture draws.

Fortunately you can ignore all this and just play.

CREDITS

System Design:	Mike Austin
Implementation:	Nick Austin
Game Design:	Pete Austin
Implementation:	Mike Austin
Graphics:	James Horsler
To your Micro:	Nick Austin
Delayed by:	Adrian Mole
Cover Design:	Margaret Austin
Cover Picture:	Godfrey Dowson
Production:	Simon Stable, A & M Litho, Option A, etc.
Tested by:	Pete Austin
Packed by:	Bernard Wise

HINT REQUEST

Level 9 will provide a comprehensive hint sheet for THE WORM IN PARADISE free of charge. To obtain it cut off this coupon and return it to Level 9. You must include a large stamped envelope addressed to yourself for the return of the hint sheet. Level 9 cannot enter into any correspondence or provide any information on the telephone in connection with solving this adventure.



ORDER FORM

AMSTRAD cpc464/664/6128, ATARI 48k, BBC 32k, COMMODORE 64, MSX 64k, SPECTRUM 48k
(Details of other computer types available on request. Please send S.A.E.)

NAME : _____ COMPUTER : _____

ADDRESS : _____

Cassette £9.95	Disk £11.95 BBC (8271 dfs) /CBM	Disk Upgrade £2.50	Cassette £6.95
Colossal Adventure <input type="checkbox"/>	<input type="checkbox"/>	<input type="checkbox"/>	Emerald Isle <input type="checkbox"/>
Adventure Quest <input type="checkbox"/>	<input type="checkbox"/>	<input type="checkbox"/>	Red Moon <input type="checkbox"/>
Dungeon Adventure <input type="checkbox"/>	<input type="checkbox"/>	<input type="checkbox"/>	
Snowball <input type="checkbox"/>	<input type="checkbox"/>	<input type="checkbox"/>	
Return to Eden <input type="checkbox"/>	<input type="checkbox"/>	<input type="checkbox"/>	
Lords of Time <input type="checkbox"/>	<input type="checkbox"/>	<input type="checkbox"/>	
Erik the Viking <input type="checkbox"/>	<input type="checkbox"/>	<input type="checkbox"/>	
The Worm in Paradise <input type="checkbox"/>	<input type="checkbox"/>	<input type="checkbox"/>	

(Amstrad/BBC/CBM/Spectrum only)

I enclose a cheque/postal order for £ _____
(Please add £1 per item if outside the UK).