

MAGNUM

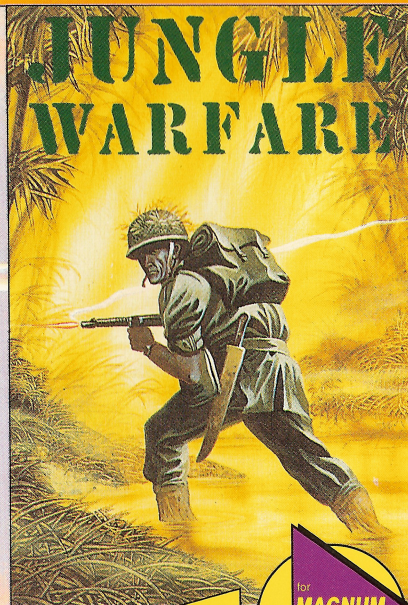
Light Phaser

Adrenalin sapping action!!!

Level after level of hostile forces to destroy - tanks, copters, jeeps, crack commando snipers, enemy aircraft and river boats!!!

Airport, bridge, swamp ridden jungle, rivers and many more levels of pump action combat!!!

JUNGLE WARFARE



MASTERTRONIC

for
**MAGNUM
LIGHTPHASER**
also keyboard or
joystick
compatible

SIDE A: MAGNUM LIGHT PHASER GUN
SIDE B: JOYSTICK/KEYBOARD

LOADING INSTRUCTIONS

464: Press CTRL and small ENTER. Press PLAY.
6128: Type ITAPE and press RETURN.
Press small CONTROL and ENTER. Press PLAY

GAMEPLAY

The object is to traverse the enemy jungle territory, fending off hostile fire and destroying a series of enemy bases, to reach safe ground. You must shoot your enemies but remember that some of the larger ones need to be hit several times before they are destroyed. If you fail to destroy the enemy quickly enough he will fire back and you will lose one of your three lives. You must collect ammo along the way by shooting it or you will soon run out. Be careful - some of the enemy snipers are well camouflaged and watch out for body heat detecting homing missiles - they're dangerous!
JUNGLE WARFARE - ABSOLUTELY BRILLIANT!!!!

LIGHTGUN CONTROLS - When game has loaded press FIRE to play. Press P to pause and restart the game.

JOYSTICK/KEYBOARD CONTROLS - When game has loaded press FIRE to play. Press ENTER to pause and restart the game. To shoot the enemy you must move your gun sights using up/down/left/right to aim and then FIRE.

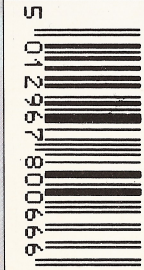
JOYSTICK/KEYBOARD CONTROLS - you can use a compatible joystick or Keyboard using the following keys:

O - LEFT **P - RIGHT** **Q - UP**
A - DOWN **SPACE - FIRE**

WARNING: ALL RIGHTS OF THE PRODUCER AND THE OWNER OF THE WORK REPRODUCED RESERVED. UNAUTHORISED COPYING, HIRING, LENDING, PUBLIC PERFORMANCE, RADIO OR TV BROADCAST OR DIFFUSION OF THIS CASSETTE PROHIBITED. THIS PROGRAMME IS SOLD ACCORDING TO VIRGIN MASTERTRONIC TERMS OF TRADE AND CONDITIONS OF SALE COPIES OF WHICH ARE AVAILABLE ON REQUEST.

© Virgin Mastertronic Limited 1989

Made in Great Britain



JUNGLE WARFARE -ITALIANO

LATO A: PISTOLA MAGNUM LIGHT PHASER

LATO B: JOYSTICK/TASTIERA

ISTRUZIONI DI CARICAMENTO

464 : Premi CTRL e INVIO piccolo. Premi PLAY.

6128 : Batti TAPE e premi RETURN.

Premi CTRL piccolo e INVIO. Premi PLAY.

CONTROLLI TASTIERA

SINISTRA - O

DESTRA - P

SU - Q

GIU - A

BARRA - FUOCO

JUNGLE WARFARE -DEUTSCH

SEITE A: MAGNUM LIGHT PHASER-SPIEL

SEITE B: JOYSTICK/TASTATUR

LADEANWEISUNGEN

464 : Auf CTRL und die kleine ENTER-Taste drücken. Auf PLAY drücken.

6128: ITAPE eintippen und auf RETURN drücken.
Auf CTRL und die kleine ENTER-Taste drücken.
Auf PLAY drücken.

TASTATURSTEUERUNG

LINKS - O

RECHTS - P

HOCH - Q

RUNTER - A

LEERTASTE - FEUER

JUNGLE WARFARE -FRANÇAIS

FACE A : PISTOLET MAGNUM LIGHT PHASER

FACE B : MANCHE A BALAI/CLAVIER

INSTRUCTIONS DE CHARGEMENT

464 : Appuyez sur CTRL et petit ENTER.

Appuyez sur PLAY

6128: TAPÉZ ITAPE et appuyez sur RETURN.

Appuyez sur CONTROL et le petit ENTER.

Appuyez sur PLAY.

COMMANDES AU CLAVIER - O

A GAUCHE - K

A DROITE - L

VERS LE HAUT - Q

VERS LE BAS - A

BARRE D'ESPACEMENT - FEU

JUNGLE WARFARE - ESPAÑA

CARA A: MAGNUM LIGHT PHASER GUN

CARA B: JOYSTICK/TECLADO

INSTRUCCIONES DE CARGA

464 : Pulsar CTRL y la tecla ENTER pequena.
Pulsar PLAY.

6128 : Teclear ITAPE y la tecla ENTER.
Pulsar CONTROL y la tecla
ENTER pequena. Pulsar PLAY.

CONTROL POR TECLADO

IZQUIERDA - O

DERECHA - P

ARRIBA - Q

ABAJO BARRA - A

ESPACIADORA - DISPARO