

Map for

STARCROSS

INFOCOM

CROSS SECTION AT THIRD RING

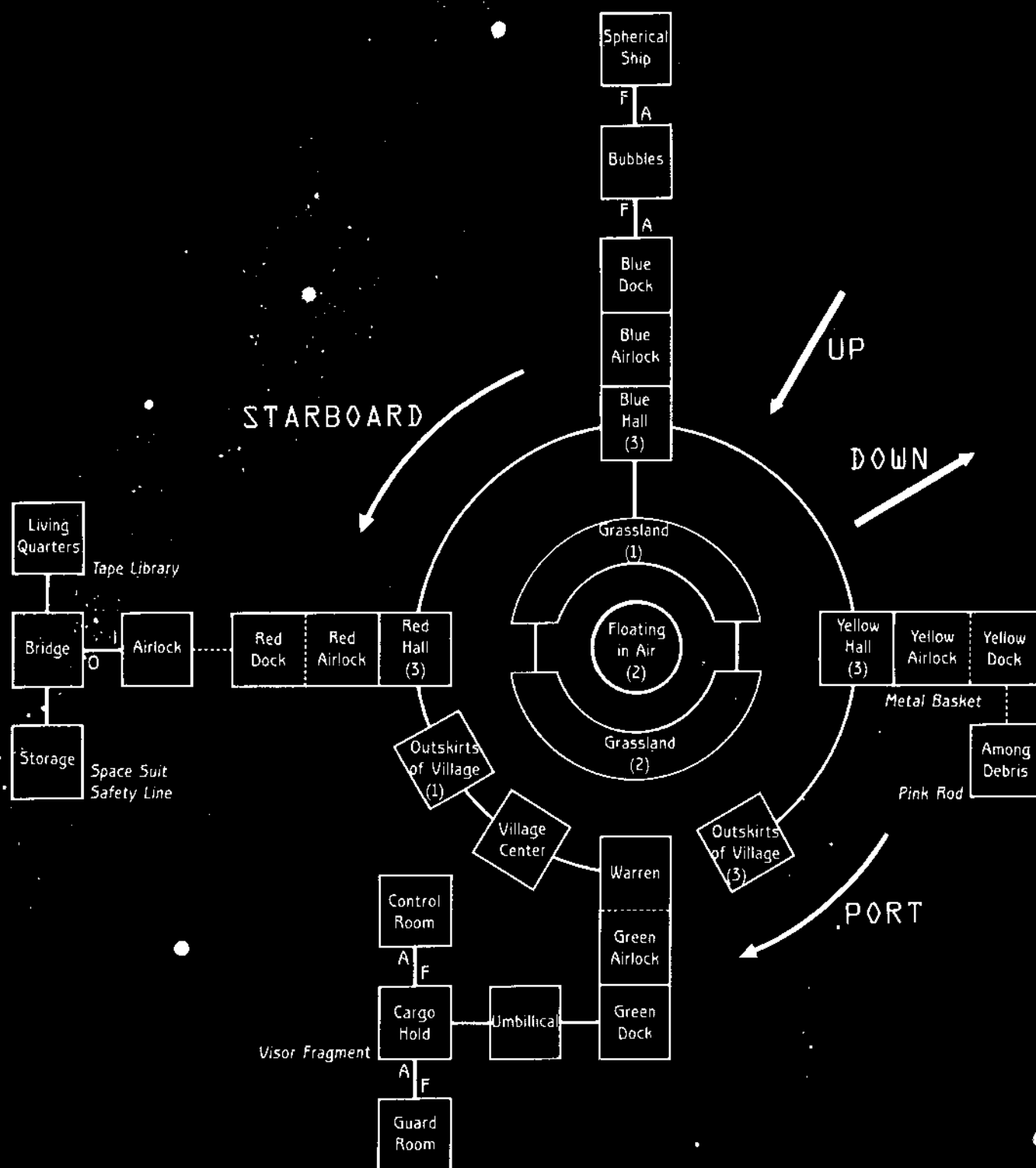
LEGEND

_____ NORMAL
 CONNECTION
 _____> ONE-WAY
 CONNECTION
 CONNECTION
 REQUIRING
 PROBLEM SOLVING

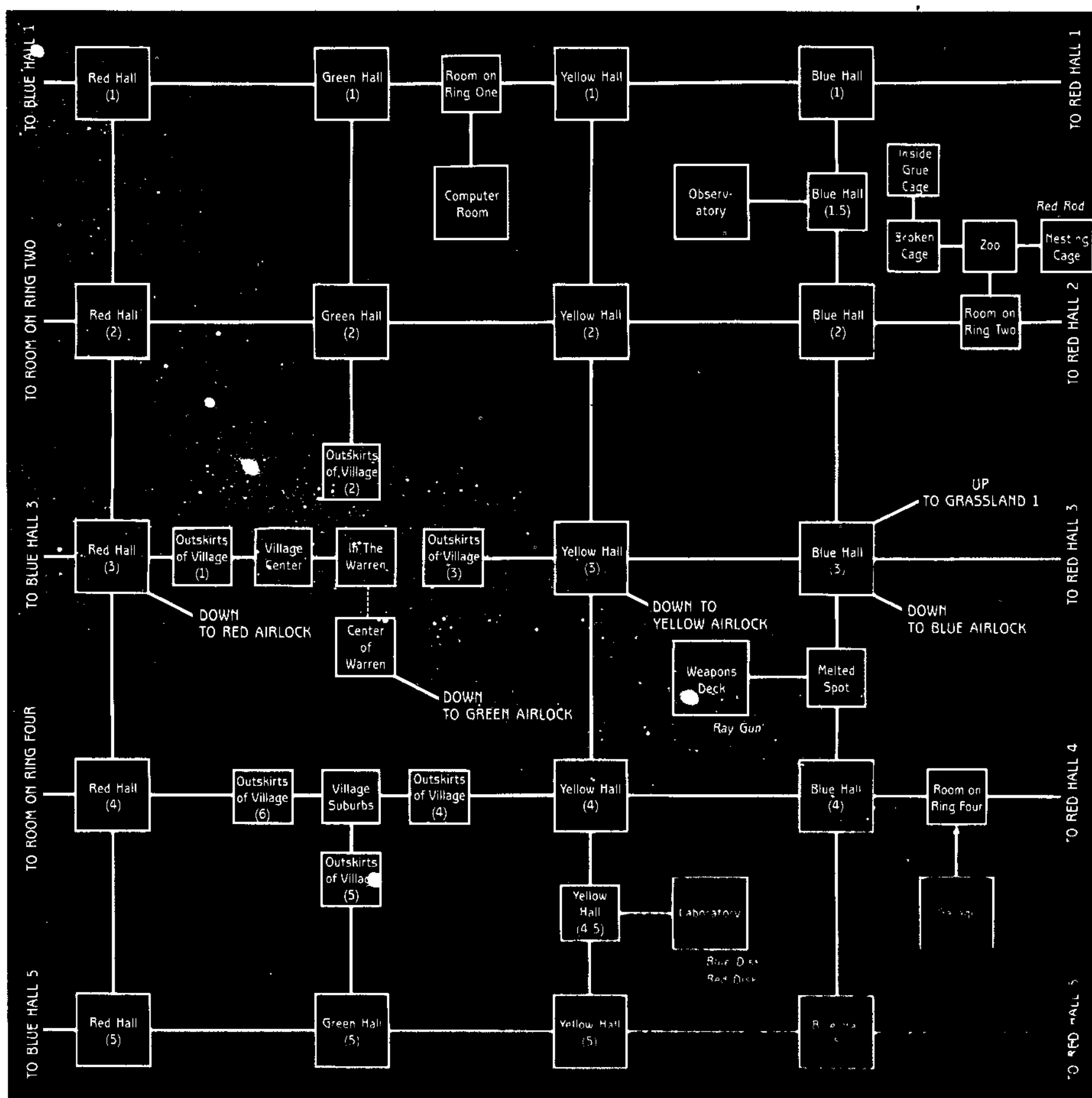
U-UP F-FORE I-IN
 D-DOWN A-AFT O-OUT

NOTES:

TO AVOID UNNECESSARILY GIVING
 AWAY PROBLEMS, ONLY OBJECTS
 IMMEDIATELY VISIBLE UPON
 ENTERING A ROOM ARE LISTED.
 WHERE MORE THAN ONE DIRECTION
 LEADS TO THE SAME PLACE, ONLY
 ONE IS SHOWN.

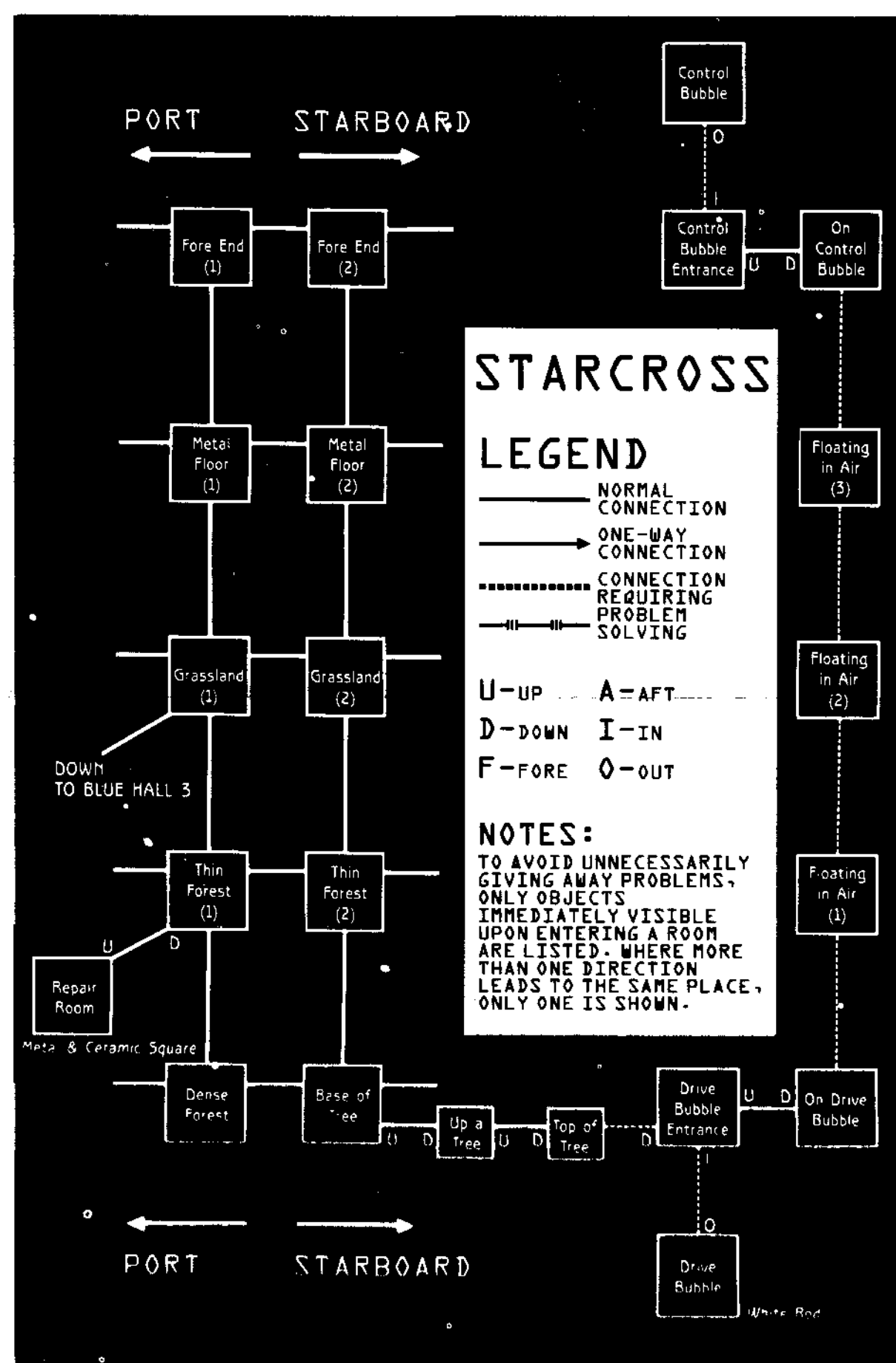


← PORT FORE END OF OUTER REGION STARBOARD →



← PORT AFT END OF OUTER REGION STARBOARD →

FORE END OF INNER REGION



AFT END OF INNER REGION

STARCROSS

LEGEND

- NORMAL CONNECTION
- ONE-WAY CONNECTION
- CONNECTION REQUIRING PROBLEM SOLVING

U-UP A-AFT
D-DOWN I-IN
F-FORE O-OUT

NOTES:

TO AVOID UNNECESSARILY GIVING AWAY PROBLEMS, ONLY OBJECTS IMMEDIATELY VISIBLE UPON ENTERING A ROOM ARE LISTED. WHERE MORE THAN ONE DIRECTION LEADS TO THE SAME PLACE, ONLY ONE IS SHOWN.