

OPERATION: Atombender
I.M.A. Special Terrorist Unit
MISSION BRIEFING for
the Amstrad.

TOP SECRET

US
GOLD

CONFIDENTIAL
AGENT'S EYES
ONLY!
OFFICER COURIER
ONLY!

TO: Special Agent 4125—Mission Briefing

1. Subject: Mission of vital importance to national and global security. Operations to begin immediately. Utmost urgency.

2. Situation: During the past three days, key military computer installations of every major world power have reported security failures. In each case, someone gained access to a primary missile attack computer.

Only one person is capable of computer tampering on this scale:

Professor Elvin Atombender
(hereafter referred to as "Elvin")

We believe that Elvin is working to break the computers' launch codes. When he succeeds, he plans to trigger a missile attack that will destroy the world.

3. Mission: You must penetrate Elvin's underground stronghold and stop him. To succeed you will have to evade the scientist's robot guards, break his security code and find his control centre. Your predecessors, Agents 4116 and 4124 (may they rest in peace), were able to send back some information about Elvin's installation. It is detailed in the following pages.

Your only weapons will be your keen analytical mind and your MIA9366B pocket computer. Good luck. The world is depending on you.

DOSSIER: ELVIN ATOMBENDER

Sex: Male **Age:** 62
Race: Caucasian
Height: 5'4"
Weight: 120lbs.
Hair: No Eyes: Yes
Traits: Avoids people, hates animals, likes M&M's



Childhood: Elvin was a nice boy—his mother loved him. In school, he loathed sports but excelled in mathematics. He seldom caused any problems (at least, none with any global consequences). At home, Elvin spent most of his time gaping into his computer screen, and this did not prove harmful to anyone, either.

Oh, there was the time Elvin broke into the phone company's computer system and changed the records. Angry at his parents for some real or imagined crime, the playful youngster added a long distance call to their monthly bill. A five-and-a-half hour call to Afghanistan. His parents were tolerant. They were sure he would eventually grow out of his passion for tinkering with other people's computers. "Let him have his fun," his mother would say. To which his father would reply, "Kids will be kids." There was, of course, no way for them to know what the future would bring.

Turning point: It was during his days as a college student that Elvin was transformed from a promising young man into a snivelling evil-doer. He had become obsessed with a new computer game, "Giggling Penguin Invaders From Outer Space In The Vicinity Of Ursa Minor." (Elvin had always hated penguins from Ursa Minor.)

The game's score counter went up to 100-billion, and Elvin was determined to "max it out." After playing the game for several days without sleep, he had vaporized enough penguins to pile up 99,999,999,785 points. One more tuxedoed avian and he'd have it.

Elvin shook out his joystick hand. A 250-point penguin waddled onto the screen. Elvin's eyes lit up. He took aim. And then, at that precise moment, the power failed. Elvin's game was lost; he'd never get a score that high again. In that instant, something snapped in Elvin's mind. He was consumed by a single maniacal obsession. He would repay the world for the injustice it had dealt him.

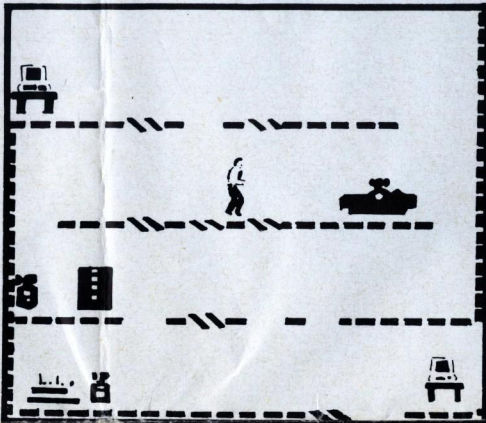
For many years, Elvin waited. He became a distinguished professor, a renowned expert in computers and robotics. Then, eight years ago, he disappeared. His whereabouts were unknown until now.

INTELLIGENCE REPORT

Elvin's stronghold

Using a fortune he amassed by raiding the computer systems of various financial institutions, Elvin constructed a vast, underground stronghold packed with computer equipment. There, in seclusion, Elvin spent four years working to breach the security of military computer installations around the world. As you know, he has succeeded.

Our computers estimate that he will break the launch codes and trigger the missile attack in exactly six hours. This is the amount of time you will have to complete your mission.



Elvin's stronghold has 32 rooms. Some of them are used as living quarters and others are computer rooms. But (here comes the strange part) our intelligence indicates that each room has a series of floors, or catwalks, which are connected by lifts. The last agent who tried to crack Elvin's stronghold gave the following report:

(excerpt) "I have just entered what appears to be a living room... (static)... peculiar. All of the furniture seems to be on catwalks high above the floor... not sure how to get up there... (static)... I can see a fireplace and a sofa directly over my head... how can anyone live like this? Hold it... (static)... I think a robot may have seen me... aaarrgh!!!" (transmission terminated).

Clearly, Elvin has constructed the rooms of his stronghold in such a way that only he can negotiate them easily. The floors and catwalks often end quite abruptly, dropping off into space. And, of course, they are guarded by Elvin's nasty, human-seeking robots. Devilishly clever, that Elvin.

Elvin's robots

Height: 1.57 metres **Weight:** 67 kilos

Armour type: ablative (AC:-4)

Vcc: 5 megavolts

Weaponry: high-voltage ionic plasma generator

Energy reserves: 3.14 megajoules (estimated)

Maximum angular velocity: 1.2 megaradians/fortnight

Longitudinal velocity:

Alpha class: 2.5 x 10⁻⁸c

Beta class: 1.2 x 10⁻⁸c

Gamma class: 5.9 x 10⁻⁹c

Omega class: 0c

Photovoltaic threshold: 0.12 lumens

Entropic conversion rate: 2.71828 ergs/nsec

Thermionic coefficient: 6.07 therms/hour

Sound/Motion Sensors:

These are the robot's "ears". With these sensors, a robot can home in on you whether it can see you or not.

High-voltage Electrode:

Projects a lethal electrical discharge approx. 6 feet.

Infrared Photocells:

These are the robot's "eyes". They can detect the presence of a human body's warmth anywhere in front of the robot.

Linear Induction Magnet:

The robots are propelled by linear induction motors embedded in the floors of the complex, and they cannot leave these surfaces.

Linear Induction Magnet:

The robots are propelled by linear induction motors embedded in the floors of the complex, and they cannot leave these surfaces.

Linear Induction Magnet:

The robots are propelled by linear induction motors embedded in the floors of the complex, and they cannot leave these surfaces.

Linear Induction Magnet:

The robots are propelled by linear induction motors embedded in the floors of the complex, and they cannot leave these surfaces.

Linear Induction Magnet:

The robots are propelled by linear induction motors embedded in the floors of the complex, and they cannot leave these surfaces.

Linear Induction Magnet:

The robots are propelled by linear induction motors embedded in the floors of the complex, and they cannot leave these surfaces.

Linear Induction Magnet:

The robots are propelled by linear induction motors embedded in the floors of the complex, and they cannot leave these surfaces.

Linear Induction Magnet:

The robots are propelled by linear induction motors embedded in the floors of the complex, and they cannot leave these surfaces.

Linear Induction Magnet:

The robots are propelled by linear induction motors embedded in the floors of the complex, and they cannot leave these surfaces.

Linear Induction Magnet:

The robots are propelled by linear induction motors embedded in the floors of the complex, and they cannot leave these surfaces.

Linear Induction Magnet:

The robots are propelled by linear induction motors embedded in the floors of the complex, and they cannot leave these surfaces.

Linear Induction Magnet:

The robots are propelled by linear induction motors embedded in the floors of the complex, and they cannot leave these surfaces.

Linear Induction Magnet:

The robots are propelled by linear induction motors embedded in the floors of the complex, and they cannot leave these surfaces.

Linear Induction Magnet:

The robots are propelled by linear induction motors embedded in the floors of the complex, and they cannot leave these surfaces.

Linear Induction Magnet:

The robots are propelled by linear induction motors embedded in the floors of the complex, and they cannot leave these surfaces.

Linear Induction Magnet:

The robots are propelled by linear induction motors embedded in the floors of the complex, and they cannot leave these surfaces.

Linear Induction Magnet:

The robots are propelled by linear induction motors embedded in the floors of the complex, and they cannot leave these surfaces.

Linear Induction Magnet:

The robots are propelled by linear induction motors embedded in the floors of the complex, and they cannot leave these surfaces.

Linear Induction Magnet:

The robots are propelled by linear induction motors embedded in the floors of the complex, and they cannot leave these surfaces.

Linear Induction Magnet:

The robots are propelled by linear induction motors embedded in the floors of the complex, and they cannot leave these surfaces.

Linear Induction Magnet:

The robots are propelled by linear induction motors embedded in the floors of the complex, and they cannot leave these surfaces.

Linear Induction Magnet:

The robots are propelled by linear induction motors embedded in the floors of the complex, and they cannot leave these surfaces.

Linear Induction Magnet:

The robots are propelled by linear induction motors embedded in the floors of the complex, and they cannot leave these surfaces.

Linear Induction Magnet:

The robots are propelled by linear induction motors embedded in the floors of the complex, and they cannot leave these surfaces.

Linear Induction Magnet:

The robots are propelled by linear induction motors embedded in the floors of the complex, and they cannot leave these surfaces.

Linear Induction Magnet:

The robots are propelled by linear induction motors embedded in the floors of the complex, and they cannot leave these surfaces.

Linear Induction Magnet:

The robots are propelled by linear induction motors embedded in the floors of the complex, and they cannot leave these surfaces.

Linear Induction Magnet:

The robots are propelled by linear induction motors embedded in the floors of the complex, and they cannot leave these surfaces.

Linear Induction Magnet:

The robots are propelled by linear induction motors embedded in the floors of the complex, and they cannot leave these surfaces.

Linear Induction Magnet:

The robots are propelled by linear induction motors embedded in the floors of the complex, and they cannot leave these surfaces.

Linear Induction Magnet:

The robots are propelled by linear induction motors embedded in the floors of the complex, and they cannot leave these surfaces.

Linear Induction Magnet:

The robots are propelled by linear induction motors embedded in the floors of the complex, and they cannot leave these surfaces.

Linear Induction Magnet:

The robots are propelled by linear induction motors embedded in the floors of the complex, and they cannot leave these surfaces.

Linear Induction Magnet:

The robots are propelled by linear induction motors embedded in the floors of the complex, and they cannot leave these surfaces.

Linear Induction Magnet:

The robots are propelled by linear induction motors embedded in the floors of the complex, and they cannot leave these surfaces.

Linear Induction Magnet:

The robots are propelled by linear induction motors embedded in the floors of the complex, and they cannot leave these surfaces.

Linear Induction Magnet:

The robots are propelled by linear induction motors embedded in the floors of the complex, and they cannot leave these surfaces.

Linear Induction Magnet:

The robots are propelled by linear induction motors embedded in the floors of the complex, and they cannot leave these surfaces.

Linear Induction Magnet:

The robots are propelled by linear induction motors embedded in the floors of the complex, and they cannot leave these surfaces.

Linear Induction Magnet:

The robots are propelled by linear induction motors embedded in the floors of the complex, and they cannot leave these surfaces.

Linear Induction Magnet:

The robots are propelled by linear induction motors embedded in the floors of the complex, and they cannot leave these surfaces.

Linear Induction Magnet:

The robots are propelled by linear induction motors embedded in the floors of the complex, and they cannot leave these surfaces.

Linear Induction Magnet:

The robots are propelled by linear induction motors embedded in the floors of the complex, and they cannot leave these surfaces.

Linear Induction Magnet:

The robots are propelled by linear induction motors embedded in the floors of the complex, and they cannot leave these surfaces.

Linear Induction Magnet:

The robots are propelled by linear induction motors embedded in the floors of the complex, and they cannot leave these surfaces.

Linear Induction Magnet:

The robots are propelled by linear induction motors embedded in the floors of the complex, and they cannot leave these surfaces.

Linear Induction Magnet:

The robots are propelled by linear induction motors embedded in the floors of the complex, and they cannot leave these surfaces.

Linear Induction Magnet:

The robots are propelled by linear induction motors embedded in the floors of the complex, and they cannot leave these surfaces.

Linear Induction Magnet:

The robots are propelled by linear induction motors embedded in the floors of the complex, and they cannot leave these surfaces.

Linear Induction Magnet:

The robots are propelled by linear induction motors embedded in the floors of the complex, and they cannot leave these surfaces.

Linear Induction Magnet:

The robots are propelled by linear induction motors embedded in the floors of the complex, and they cannot leave these surfaces.

Linear Induction Magnet:

The robots are propelled by linear induction motors embedded in the floors of the complex, and they cannot leave these surfaces.

Linear Induction Magnet:

The robots are propelled by linear induction motors embedded in the floors of the complex, and they cannot leave these surfaces.

Linear Induction Magnet:

The robots are propelled by linear induction motors embedded in the floors of the complex, and they cannot leave these surfaces.

Linear Induction Magnet:

The robots are propelled by linear induction motors embedded in the floors of the complex, and they cannot leave these surfaces.

Linear Induction Magnet:

The robots are propelled by linear induction motors embedded in the floors of the complex, and they cannot leave these surfaces.

Linear Induction Magnet:

The robots are propelled by linear induction motors embedded in the floors of the complex, and they cannot leave these surfaces.

Linear Induction Magnet:

The robots are propelled by linear induction motors embedded in the floors of the complex, and they cannot leave these surfaces.

Linear Induction Magnet:

The robots are propelled by linear induction motors embedded in the floors of the complex, and they cannot leave these surfaces.

Linear Induction Magnet:

The robots are propelled by linear induction motors embedded in the floors of the complex, and they cannot leave these surfaces.

Linear Induction Magnet:

The robots are propelled by linear induction motors embedded in the floors of the complex, and they cannot leave these surfaces.

Linear Induction Magnet:

The robots are propelled by linear induction motors embedded in the floors of the complex, and they cannot leave these surfaces.

Linear Induction Magnet:

The robots are propelled by linear induction motors embedded in the floors of the complex, and they cannot leave these surfaces.

Linear Induction Magnet:

The robots are propelled by linear induction motors embedded in the floors of the complex, and they cannot leave these surfaces.

Linear Induction Magnet:

The robots are propelled by linear induction motors embedded in the floors of the complex, and they cannot leave these surfaces.

Linear Induction Magnet:

The robots are propelled by linear induction motors embedded in the floors of the complex, and they cannot leave these surfaces.

Linear Induction Magnet:

The robots are propelled by linear induction motors embedded in the floors of the complex, and they cannot leave these surfaces.

Linear Induction Magnet:

The robots are propelled by linear induction motors embedded in the floors of the complex, and they cannot leave these surfaces.

Linear Induction Magnet:

The robots are propelled by linear induction motors embedded in the floors of the complex, and they cannot leave these surfaces.

Linear Induction Magnet:

The robots are propelled by linear induction motors embedded in the floors of the complex, and they cannot leave these surfaces.

Linear Induction Magnet:

The robots are propelled by linear induction motors embedded in the floors of the complex, and they cannot leave these surfaces.

Linear Induction Magnet:

The robots are propelled by linear induction motors embedded in the floors of the complex, and they cannot leave these surfaces.

Linear Induction Magnet:

The robots are propelled by linear induction motors embedded in the floors of the complex, and they cannot leave these surfaces.

Linear Induction Magnet:

The robots are propelled by linear induction motors embedded in the floors of the complex, and they cannot leave these surfaces.

Linear Induction Magnet:

The robots are propelled by linear induction motors embedded in the floors of the complex, and they cannot leave these surfaces.

Linear Induction Magnet:

The robots are propelled by linear induction motors embedded in the floors of the complex, and they cannot leave these surfaces.

Linear Induction Magnet:

The robots are propelled by linear induction motors embedded in the floors of the complex, and they cannot leave these surfaces.

Linear Induction Magnet:

The robots are propelled by linear induction motors embedded in the floors of the complex, and they cannot leave these surfaces.

Linear Induction Magnet:

The robots are propelled by linear induction motors embedded in the floors of the complex, and they cannot leave these surfaces.

Linear Induction Magnet:

The robots are propelled by linear induction motors embedded in the floors of the complex, and they cannot leave these surfaces.

Linear Induction Magnet:

The robots are propelled by linear induction motors embedded in the floors of the complex, and they cannot leave these surfaces.

Linear Induction Magnet:

The robots are propelled by linear induction motors embedded in the floors of the complex, and they cannot leave these surfaces.

Linear Induction Magnet:

The robots are propelled by linear induction motors embedded in the floors of the complex, and they cannot leave these surfaces.

Linear Induction Magnet:

The robots are propelled by linear induction motors embedded in the floors of the complex, and they cannot leave these surfaces.

Linear Induction Magnet:

The robots are propelled by linear induction motors embedded in the floors of the complex, and they cannot leave these surfaces.

Linear Induction Magnet: