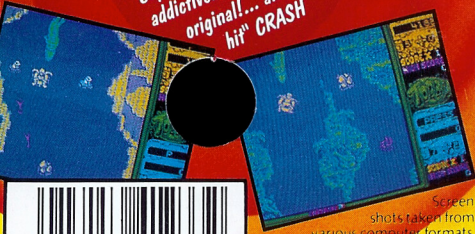


**CRAZY
ACTION!**

"Toobin' is the best...
playable, addictive and
above all, **GREAT FUN!**"
THE GAMES MACHINE
"Captures the excitement and
addictiveness of the arcade
original!... an instant
hit" **CRASH**

**FURIOUS
FUN!**



Screen
shots taken from
various computer formats



TOOBIN'



TOOBIN'

Toobin' - The first game of its kind. Join Biff and Jet, the tube-dudes, as they cruise the baddest rivers in and out of this world!

Getting Started:

A game for one or two, play either Biff or Jet in search of the most outrageous party they can find. Guide the tubedudes to places even your travel agent doesn't know about! Each river contains new and exciting backdrops to the varied obstacles that you must negotiate.



Pick up tin cans that you'll find in the rivers to defend yourself against the shoreside creeps like punks, fly fisherman, swamp monsters and even kamikaze penguins.

Watch out for sticks, branches and spiked logs that can easily burst your tube.

Paddle through the gates for mega-bonuses, but don't bump the poles or you'll halve your score. Hot toobers can rack up the points this way.

Don't lag behind 'cos the big 'gator is just waiting to catch those slow toobers at the back. Hold tight as you challenge the white water rapids.

AMSTRAD

Player 1 : Follow on screen menu

Player 2 : Follow on screen menu

Pause : CTRL and P

Quit : CTRL and Q

LOADING

Press CTRL and small ENTER key.

CONTROLS

Joystick Controls:

Left : Paddle left

Right : Paddle Right

Up : Paddle Forward

Down : Paddle Back
Fire : Throw Can
The Hit Squad,
P.O. Box 350,
Manchester.
M60 2LX

