

---

## INTRODUCTION

---

Open road racing — wheel to wheel — pistons screaming and rubber burning. That's the challenge of SUPER CYCLE. Before you begin, choose your machine and your leathers. Choose carefully, there's an ordeal ahead.

You and your machine will be pushed to the max by the course, the other competitors, and the relentless clock.

You must complete each of the race courses within a time limit, in order to continue. Crash and you lose valuable seconds. Each of the more than seven courses poses unique challenges — water on the road, ice, road barricades and other dangerous obstacles. When you see a road sign that means slippery when wet, you better listen. There's day and night courses, city and country, hills and mountains, desert courses and streaking through the sunlight next to Cape Canaveral.

Accelerate up through the gears, jockey for position and bump the other riders. Go for top speed, but try not to go out of control.

Good luck. Your reflexes better be as sharp as the turns up ahead.

---

## OBJECTIVE

---

You must complete each race course within the specified time, in order to go on to the next course. Watch out for the other riders — you can bump them and they can bump you. Steer through the pack, and avoid road obstacles — crashing eats up valuable time. Complete all the courses at one of the difficulty levels and you get a checkered flag next to your name on the racing scoreboard.

Copyright subsists on this program. All rights of the Producer reserved. Unauthorized broadcasting, diffusion, public performance, copying or re-recording, hiring, leasing, renting and selling under any repurchase scheme in any manner is prohibited.

---

## GETTING STARTED: AMSTRAD

---

**CASSETTE:** Press CTRL and SMALL ENTER Key and press PLAY on the cassette recorder. If your Amstrad has a disk drive consult user manual. This game is multi-load.

**DISK:** Type RUN " SUPER and press ENTER and game will load automatically.

---

## THE CONTROLS

---

Push forward on the joystick to accelerate, and pull back to slow down. Push left or right with the joystick to steer.

There are three gears. To gear up, push the joystick forward and press the fire button. With the joystick centred, simply press the fire button to gear down. The three lights in the centre of the dash indicate what gear you're in. The top light is the highest gear. The bottom light is the lowest gear. The light is coloured yellow for the gear you're in.

Keyboard O=Left P=Right  
A=Accelerate Z=Decelerate Space Bar=Change gear

---

## RACING

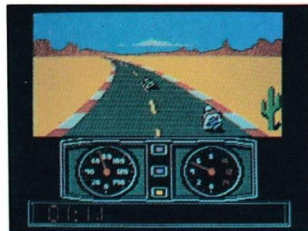
---

Each course has a set time limit. The bottom of your dash shows your elapsed time, and your total points. The more distance you cover, the more points you accumulate.

Watch out for road conditions and unusual obstacles. You never know what you're going to find out there. Lamp posts, oil slicks, even road pylons that narrow the course to a single lane. Watch for special bonus flags — hit those for extra points and time.

Time it just right, cut and accelerate with split second precision, and you could end up on top. On top of the racing scoreboard!

# Super Cycle. Hang on. If you can.



Screens as seen on Commodore 64/128.  
Other machines may vary.



**EPYX**  
COMPUTER SOFTWARE

Epyx is a registered trademark No. 1195270.

You're sitting on 750 cc's of screaming machine, chrome and pistons ready for the course. It's you and your cycle against the road, the curves, the other motorcycles and the clock. Hot rubber on hot streets as you scream to victory.

Racing was never so fast and furious.

It takes split second timing. You must know when to cut, when to speed up, when to brake. Hesitate, and there's no way you'll win. Act rashly, and you crash.

You race through progressively harder courses. Finish successfully, and you get to try the next one. But don't push your machine too far. Keep your eye on the instruments. Push it to the limit, and you win. Push it over, and you crash.

- Race against Other Motorcycles through Countryside that Changes from Course to Course.
- Watch Realistic Instruments — Tachometer, Speedometer.
- Lean into the Turns, Scream Out into the Lead.
- One Player.

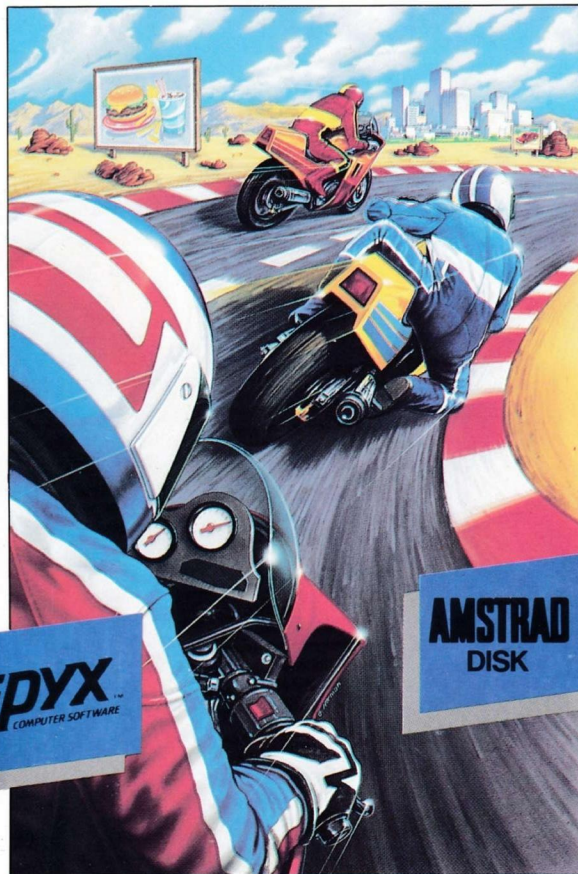


Manufactured in the U.K. under licence from Epyx by U.S. Gold Limited, Unit 2/3, Holford Way, Holford, Birmingham B6 7AX.

**SUPER CYCLE**

**EPYX**  
COMPUTER SOFTWARE

**AMSTRAD**  
DISK



**AMSTRAD**  
DISK

**SUPER CYCLE**

**YOUR OPPORTUNITY TO JOIN  
the U.S. GOLD CLUB!**

If you are looking for more than fun and games on your computer and would like to share programmers' information on companies, programs, and ground affairs, we would be delighted if we will give you, through a regular newsletter, we will give you direct insight into future products and allow you a forum to exchange your views with other members.

**FREE MEMBERSHIP  
FOR A LIMITED PERIOD!**

For a limited period U.S. Gold are pleased to offer FREE Membership! All you pay 90 pence to cover postage and packing and you will receive a membership card, badge and U.S. Gold Bulletin Newsletter.

Please complete the order form and return with a cheque or postal order made payable to U.S. Gold Limited, to U.S. Gold Club, Unit 2/3 Holford Way, Holford, Birmingham B6 7AX. Please allow 21 days for delivery.

I have enclosed a cheque/postal order for 90p.

Name \_\_\_\_\_

Address \_\_\_\_\_

Post Code \_\_\_\_\_

My Computer is Amstrad ☐ Atari ☐ BBC ☐ CBM64 ☐ MSX ☐ Spectrum ☐