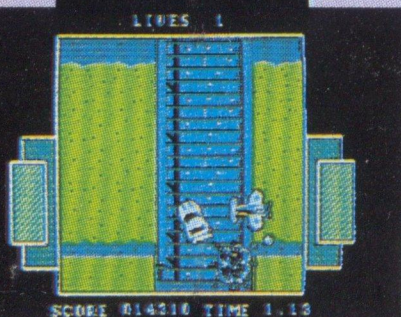


MAGNUM

Light phaser



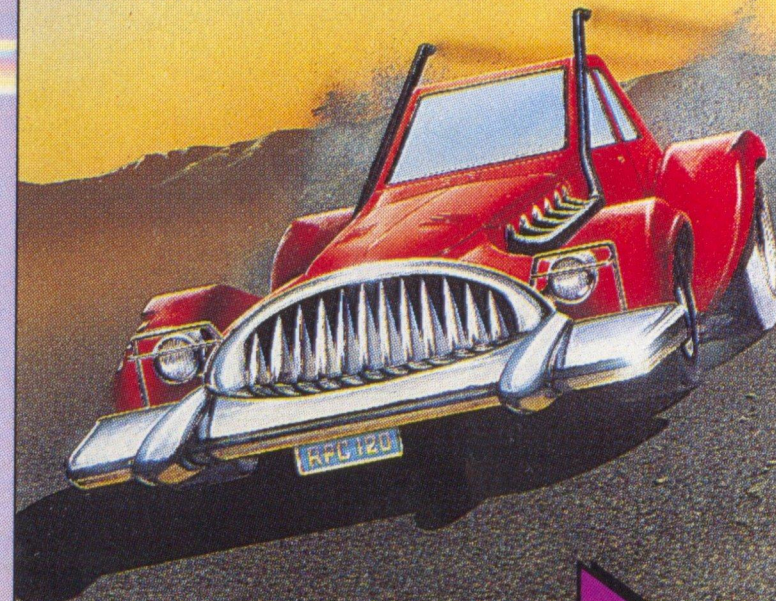
Action!
Action!
Action!

A frantic race across America pursued by crazy competitors who'll stop at nothing to beat you to New York and the prize that awaits you. Be merciless - it's the only way to survive!



AMERICAN TURBO-KING

AMERICAN TURBO-KING



SIDE A: MAGNUM LIGHT PHASER GUN
SIDE B: JOYSTICK/KEYBOARD

LOADING INSTRUCTIONS

464: Press CTRL and small ENTER. Press PLAY.
6128: Type ITAPE and press RETURN.
Press small CONTROL and ENTER. Press PLAY

GAMEPLAY

When the game has loaded press FIRE to play. The object of the game is to drive your turbocharged, armour plated supercar across America. There are 5 stages to your journey: CALIFORNIA BEACH RACE, ROCKY MOUNTAIN PASS, GRAND CANYON JUMP, GREAT LAKES STAGE, NEW YORK CITY IN SIGHT. Steer through rough terrain and drive over ramps to jump over rocks and other obstacles but you must avoid driving through water as your car will become waterlogged and unable to continue. During the game hostile cars, helicopters and planes will try to bomb you so use your lightgun, or press FIRE, to shoot them. You have 3 lives for each of the five stages. Press CAPS SHIFT and P together to pause and restart the game.

LIGHTGUN CONTROLS - control your car by shooting the left and right icons to steer and by shooting your car to switch from forwards to reverse gear.

JOYSTICK/KEYBOARD CONTROLS - you can use a compatible joystick or Keyboard using the following keys:

O - LEFT

P - RIGHT

Q - ACCELERATE

A - BRAKE OR REVERSE

SPACE - FIRE

WARNING: ALL RIGHTS OF THE PRODUCER AND THE OWNER OF THE WORK REPRODUCED RESERVED. UNAUTHORISED COPYING, HIRING, LENDING, PUBLIC PERFORMANCE, RADIO OR TV BROADCAST OR DIFFUSION OF THIS CASSETTE PROHIBITED. THIS PROGRAMME IS SOLD ACCORDING TO VIRGIN MASTERTRONIC TERMS OF TRADE AND CONDITIONS OF SALE COPIES OF WHICH ARE AVAILABLE ON REQUEST.

Virgin Mastertronic Limited 1989

Made in Great Britain



AMERICAN TURBO KING -ITALIANO

LATO A: PISTOLA MAGNUM LIGHT PHASER
LATO B: JOYSTICK/TASTIERA

ISTRUZIONI DI CARICAMENTO

464 : Premi CTRL e INVIO piccolo. Premi PLAY.
6128 : Batti TAPE e premi RETURN.
Premi CTRL piccolo e INVIO. Premi PLAY.

CONTROLLI TASTIERA

SINISTRA - O
DESTRA - P
BARRA - FUOCO
ACCELERÀ - Q
FRENO O MARCIA INDIETRO - A

AMERICAN TURBO KING -DEUTSCH

SEITE A: MAGNUM LIGHT PHASER-SPIEL
SEITE B: JOYSTICK/TASTATUR

LADIANWEISUNGEN

464 : Auf CTRL und die kleine ENTER-Taste drücken. Auf PLAY drücken.
6128: ITAPE eintippen und auf RETURN drücken.
Auf CTRL und die kleine ENTER-Taste drücken.
Auf PLAY drücken.

TASTATURSTEUERUNG
LINKS - O
RECHTS - P
LEERTASTE - FEUER
BREMSSEN - Q
ODER RÜCKWÄRT - A

AMERICAN TURBO KING -FRANÇAIS

FACE A : PISTOLET MAGNUM LIGHT PHASER
FACE B : MANCHE A BALAI/CLAVIER

INSTRUCTIONS DE CHARGEMENT

464 : Appuyez sur CTRL et petit ENTER.
Appuyez sur PLAY
6128: TAPEZ ITAPE et appuyez sur RETURN.
Appuyez sur CONTROL et le petit ENTER.
Appuyez sur PLAY.

COMMANDES AU CLAVIER - O

A GAUCHE - P
A DROITE
BARRE D'ESPACEMENT - FEU
ACCELERE - Q
FREINE OU FAIT MARCHÉ ARRIÈRE - A

AMERICAN TURBO KING - ESPAÑA

CARA A: MAGNUM LIGHT PHASER GUN
CARA B: JOYSTICK/TECLADO

INSTRUCCIONES DE CARGA

464 : Pulsar CTRL y la tecla ENTER pequeña.
Pulsar PLAY.
6128 : Teclear ITAPE y RETURN.
Pulsar CONTROL y la tecla
ENTER pequeña. Pulsar PLAY.

CONTROL POR TECLADO

IZQUIERDA - O
DERECHA - P
ESPACIADORA - DISPARO
ACELERADOR - Q
FRENO O MARCHA ATRAS - A