

## SLALOM-GIANT-DOWNHILL RACE

You must go between either two RED gates or two BLUE gates.

If the gates are vertical, you can enter from either the right or left, but the next one must be from the opposite direction.

### COMMANDS

#### JOYSTICK

↑ Accelerate  
↓ Slow down  
→ Turn right  
← Turn left  
Fire + → Turn right quickly  
Fire + ← Turn left quickly  
Fire + ↙ Swerve left  
Fire + ↘ Swerve right

#### KEYBOARD

↑  
↓  
→  
←  
Shift →  
Shift ←  
Shift ← ↓  
Shift → ↓

Presse FIRE or SHIFT to speed up the turn.

To STOP SWERVE and SLOW DOWN.

A penalty will be incurred for every gate missed and every fall.

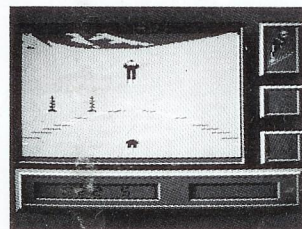
You must cross the final pennant.

## SKI JUMP

For the ski jump, and in order to obtain the greatest distance, you must achieve the best possible position (30° incline) throughout the "flight" by pressing the fire button (or the SHIFT key) whilst pulling or pushing the joystick (keyboard ↑ and ↓).

With the disc version of EDDIE EDWARDS SUPER SKI, there is also a choice of piste option.

All the events in Competition mode consist of two rounds.



Event

Round No

Player No

Time or  
Distance (ski jump)

Penalties

— Pause : PRESS P

— Return to Main Menu : PRESS CTRL M



AMSTRAD cpc SCREENS

Welcome to Eddie Edwards Super Ski !

Fly like "the Eagle" on the SKI JUMP. Compete in the SLALOM, or GIANT SLALOM, or speed your way on the DOWNHILL RACE.

Eddie Edwards Super Ski is a 3D ski simulation, incorporating the speed and realism of the major events, without the risk of broken limbs ! Use your skill to remain "on piste" and dodge the many fir trees and groups of spectators lining the way.

- 4 major events
- Training or competition mode
- 1 to 6 players
- Keyboard or joystick

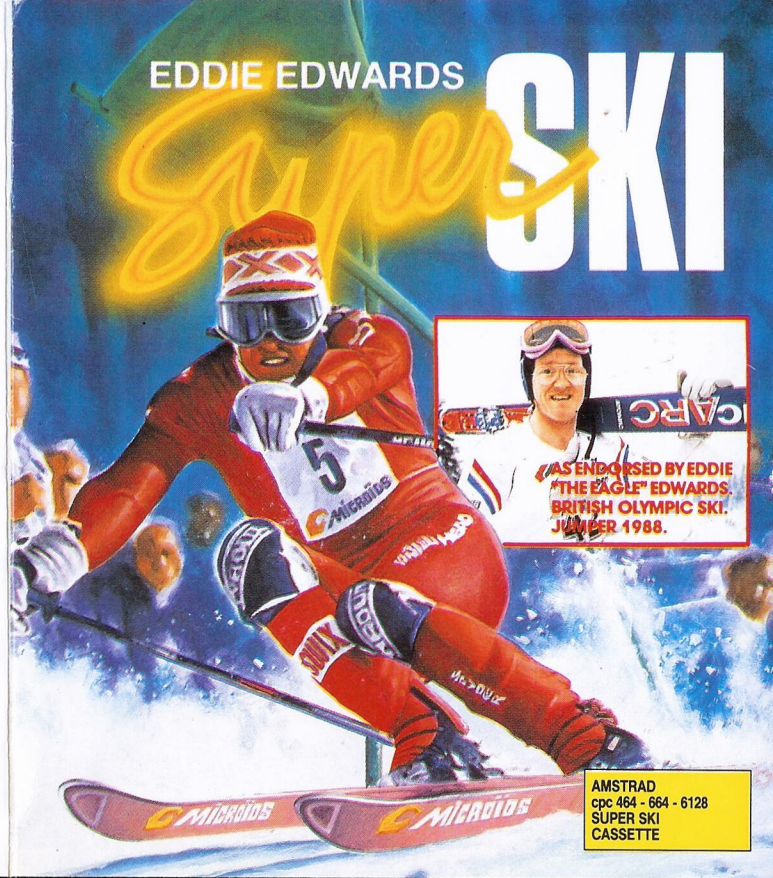
Endorsed by Eddie "the Eagle" Edwards. British Olympic Ski-jumper 1988.

©1988 MICROIDS All Rights Reserved

Manufactured in France



SUPER SKI for AMSTRAD cpc



AMSTRAD  
cpc 464 - 664 - 6128  
SUPER SKI  
CASSETTE

