

HEY THERE!!!

Have you joined the IN CROWD? Are you a member of the SILVER CLUB? If not, then we in the SILVER CLUB would love to hear from you!

To become a member just complete the application slip and return it to the address below, enclosing a cheque or postal order for £1.99 (payable to FIREBIRD SOFTWARE). We will then send you a bumper pack of goodies including BADGES, STICKERS, POSTERS, NEWSLETTERS, AN EXCLUSIVE MEMBERSHIP NUMBER, YOUR OWN MEMBERSHIP CARD (subject to availability), PLUS a FREE SILVER GAME OF YOUR CHOICE!!! Every three months or so, we'll send you a newsletter containing details of new SILVER GAME releases, competitions, special offers and other news.

Name Age.....

Type of computer.....

Free Silver game of your choice.....

Address.....

.....Postcode.....

Return to: SILVER CLUB
64-76 New Oxford St., London WC1A 1PS

Silver Club membership is only open to UK residents and residents of Northern Ireland. Firebird and the Firebird logo are registered trademarks of British Telecommunications plc

CYLU

© G. FOLEY

Amstrad Conversion by G. FOLEY

THE GAME

Your quest, Cylu, begins in a small crowded chamber deep within the heart of a large maze. Hidden in the maze are 24 objects which must be collected, returned to the starting point, and deposited in the Master Computer. Once all the objects have been deposited you will be deemed worthy to be our new leader. During your journey you will encounter: 32 forcefields which will bar your way to many sections of the maze (until disabled by placing the corresponding processors in the Master Computer), nine teleport terminals which, when used with the relevant teleport keys, will provide access to isolated areas of the maze, a master refuel (RFL) at the base unit, a master return to base (RTB) unit, and 30 fuel canisters.

LOADING

AMSTRAD 464 OWNERS

1. Place the rework cassette into the cassette unit and press PLAY.

2. Hold down CTRL and press the SMALL ENTER key.

AMSTRAD 664, 6128 and 464+ DISK OWNERS.

1. Hold down SHIFT and press the @ key. Type TAPE and press RETURN.

2. Connect a suitable cassette player to your computer, according to the User Manual, and insert the rework cassette.

3. Hold down CONTROL and press the ENTER key.

4. Press PLAY on the cassette player.

NOTE: Full loading instructions can be found in your Amstrad Manual.

PLAYING THE GAME

R=Top Left !=Top Right V=Bottom Left M=Bottom Right

Abort=Control and Escape Pause=Space Bar

Restart Game=Control (when pause on) To Load=Control and L

To Save=Control and S To Pick up Object=Enter

To Drop Object=Delete To Select=Shift

To Examine=Tab To Use=Caps Locked

Examine Force Field=Control (when pause off)

Cylu may carry up to five objects at any time in the cargo bays (indicated on screen by the numbered squares). Only one bay may be accessed at any time - selected using the 2, 3 or 4 keys.

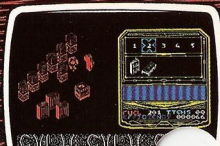
Try to finish the quest with as low an efficiency rating as possible.

Good Luck...

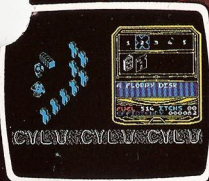
WARNING: Copyright subsists in all Firebird Software, documentation and artwork. All rights reserved. No part of this software may be copied, transmitted in any form, or by any means, hired or lent without the express permission of the publisher.

If this program is faulty, or fails to load, please return it to the address below CLEARLY MARKED 'RETURNS' and it will be replaced free of charge. This offer does not affect your statutory consumer rights.

Firebird Software, First Floor, 64-76 New Oxford Street, London WC1A 1PS
Firebird and the Firebird logo are registered trademarks of
British Telecommunications plc



Screen pictures shown
may be different machine
versions of game.



Crack the logic of the super-maze, and pass the ultimate test.
Trovate il sistema logico che vi condurrà fuori dal labirinto, e superate
il test ultimo.
Rompe la lógica del super-laberinto y sal victorioso de la prueba
definitiva.
Breek de logica van de super doolhof en slaag voor de moeilijkste test.
Los logikken af super labirinten og gennemfor den endelige test.
Knacken Sie das System dieses Superlabirynth und bestehen Sie die
letzte Prüfung.
Démezlez la logique du super labyrinthe et passez le test des tests.
Keyboard or Joystick

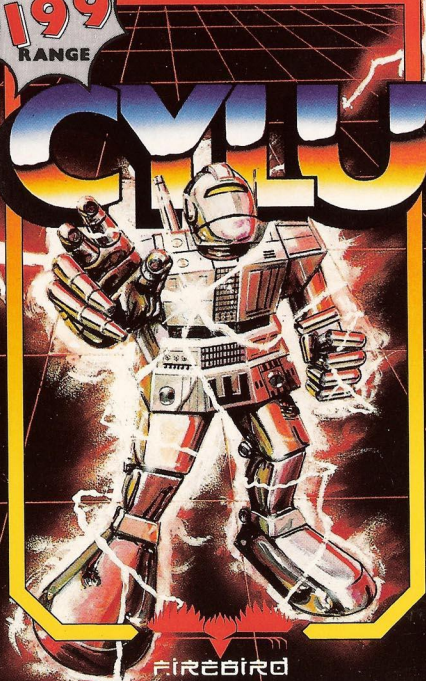


AMSTRAD 464
664 6128

SILVER
199
RANGE

AMSTRAD 464/664/6128

199



firebird

Other exciting games in the Firebird
199 Silver range*

Spectrum

Booty
Shorts Fuse
Cylu
Spiky Harold
Seabase Delta
The Wild Bunch
Helichopper
Spike
Ninja Master
Star Firebirds
Buccaneer
Rebelstar
Thrust
The Happiest Days
of Your Life
Gyron Arena
Olli and Lissa
Bomb scare
Kai Temple

CBM 16

Runner
Shark
Booty
Torpedo Alley

Atari

800/800XL/130XE
Thrust
Collapse
Ninja Master
Warhawk

CBM 64/128

Booty
Cylu
Seabase Delta
Raging Beast
Thrust
Collapse
Caverns of Eriban
Freak Factory
Ninja Master
Harvey Headbanger
The Happiest Days
of Your Life
Warhawk
Galaxibirds
Spiky Harold

Amstrad

Shorts Fuse
Seabase Delta
Spiky Harold
Thrust
Harvey Headbanger
Star Firebirds
Ninja Master
Collapse
Bomb scare
Wild Bunch
Helichopper

* Correct at time of printing